

### Características Técnicas

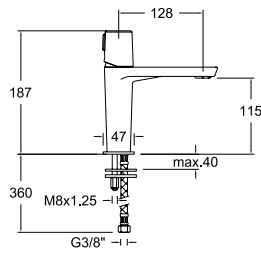
- Cartucho cerámico Ø35 mm
- Cartuchos monomando con Sistema Termostop Block de limitación de la temperatura máxima del agua caliente y Sistema de ahorro de agua S2 (disponible C2 en algunos modelos) mediante la apertura de la manecilla en dos fases.
- Cartucho termostático con Sistema Hot Block de seguridad antiquemaduras y Sistema Termostop de bloqueo de la temperatura a 38°C.
- Caudal a 3 bar: Lavabo y Fregadero (de 11 l/min). Bidé (5 l/min). Ducha (12 l/min). Baño (20 l/min).
- Nivel acústico a 3 bar: < 20 dB.
- Cromado latón: 15 micras de espesor de níquel, 0,3 micras de cromo.
- Prestaciones de confort a nivel de fidelidad, sensibilidad y constancia en la selección de la temperatura.
- Resiste presiones estáticas ≤ 10 bar y golpes de ariete de 25 bar.
- Temperatura recomendada de agua caliente 55°C. Temperatura máxima de uso 65°C. Máximo 1h a 90°C.
- Presión de uso entre 1-5 bar. Recomendada 3 bar.
- Resistente al choque térmico y químico anti legionela.
- Ánodo de sacrificio anticorrosión de zinc-magnesio
- Cooltouch, sistema que permite mantener la grifería templada al tacto para evitar quemaduras.

### Technical Characteristics

- Ceramic cartridge Ø35 mm.
- Mixer tap cartridge with Thermostop Block System to limit the maximum hot water temperature and S2 Water Saving System (C2 available in some models) using a lever that opens in two phases.
- Thermostatic cartridge with Hot Block System for protecting against burns and Thermostop System to limit the temperature to 38°C.
- Water flow at 3 bar: Bathroom Sink and Kitchen Sink (11 l/min). Bidet (5 l/min). Shower (12 l/min). Bath (20 l/min).
- Sound level at 3 bar: < 20 dB.
- Chrome-plated brass: 15-micron thick nickel, 0.3 microns of chrome.
- Convenient with reliable, sensitive and consistent temperature selection.
- Withstands static pressures ≤ 10 bar and water hammer up to 25 bar.
- Recommended hot water temperature 55°C. Maximum usage temperature 65°C. Maximum 1 hour at 90°C.
- Usage pressure between 1-5 bar. Recommended 3 bar.
- Resistant to thermal shock and anti-legionella chemicals.
- Zinc-magnesium anti-corrosion sacrificial anode.
- Cooltouch, a system that allows the tap to be kept warm to the touch to avoid burns.







**340401**  
34A302435

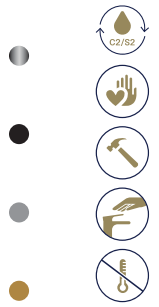


**340401NM**  
34A302369

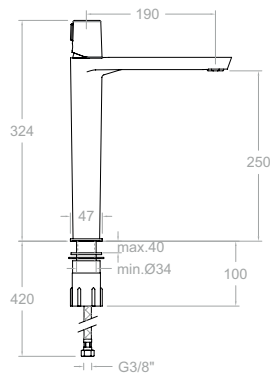
**340401NC**  
34A302368

**340401OC**  
34A302370

Tzar, monomando de lavabo.  
Tzar, single-lever basin mixer.



Cartucho Cartridge: 35100-3



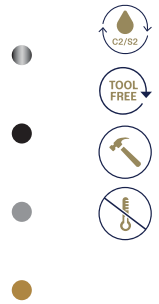
**340201**  
34A302436

**340201NM**  
34A302352

**340201NC**  
34A302351

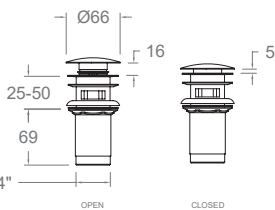
**340201OC**  
34A302354

Tzar, monomando de lavabo XL.  
Tzar, single-lever basin mixer XL.



Cartucho Cartridge: 35100-3

Recomendaciones Recommendations



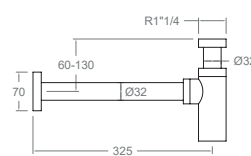
**1219L**  
197106

**1219LNM**  
99Z302477

**1219LNC**  
99Z302476

**1219LOC**  
99Z302478

Válvula de latón para desagüe sistema Click Clack.  
Quick Clack waste brass.



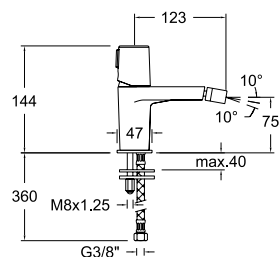
**3790**  
198960

**3790NM**  
99Z302332

**3790NC**  
99Z302331

**3790OC**  
99Z302333

Sifón.  
Brass siphon.



**340301**  
34B302438



**340301NM**  
34B302365

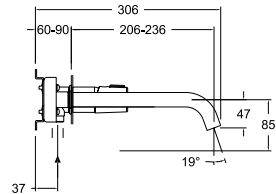
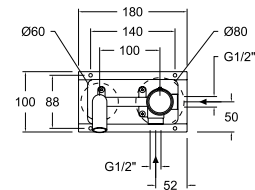
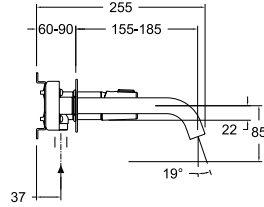
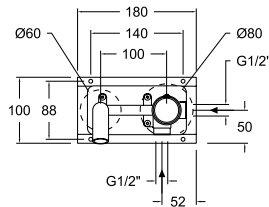
**340301NC**  
34B302364

**340301OC**  
34B302366

Tzar, monomando de bidé.  
Tzar, bidet mixer.

Cartucho Cartridge: 35100-3





Cartucho Cartridge: 35100-2

**342101**

34A302440  
XX20CT+RB21S+RB21H+CLET+3400N-35

**342101NM**

34A302903  
XX20CTNM+RB21SNM+RB21HNM+CLETNM+3400N-35NM

**342101NC**

34A302905  
XX20CTNC+RB21SNC+RB21HNC+CLETNC+3400N-35NC

**342101OC**

34A302904  
XX20CTOC+RB21SOC+RB21HOC+CLETOC+3400N-35OC

Tzar, monomando de lavabo empotrado mural.  
Tzar, wall-mounted basin mixer.



**342103**

34A302441  
XX20CT+RB21S+RB21H+CLET24+3400N-35

**342103NM**

34A302489  
XX20CTNM+RB21SNM+RB21HNM+CLET24NM+3400N-35NM

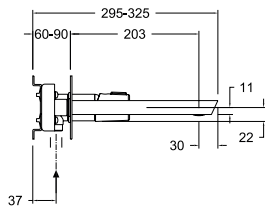
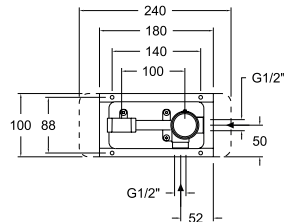
**342103NC**

34A302487  
XX20CTNC+RB21SNC+RB21HNC+CLET24NC+3400N-35NC

**342103OC**

34A302490  
XX20CTOC+RB21SOC+RB21HOC+CLET24OC+3400N-35OC

Tzar, monomando de lavabo empotrado mural.  
Tzar, wall-mounted basin mixer.



Cartucho Cartridge: 35100-2

**342001**

34A302439  
XX20CF+KXB20+CLEA+3400N-35

**342001NM**

34A302484  
XX20CFNM+KXB20NM+CLEANM+3400N-35NM

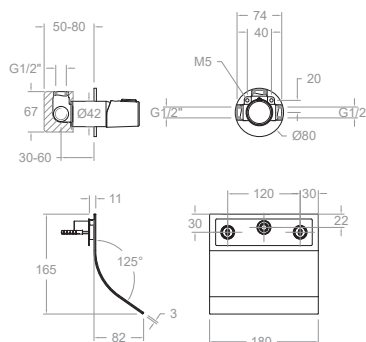
**342001NC**

34A302483  
XX20CFNC+KXB20NC+CLEANC+3400N-35NC

**342001OC**

34A302485  
XX20CFOC+KXB20OC+CLEAOC+3400N-35OC

Tzar, monomando de lavabo empotrado mural con placa metálica.  
Tzar, wall-mounted basin mixer with metallic plate.



**3416902**

34A309433  
XX1801+3400N-35+16902+RB21H

**3416902NM**

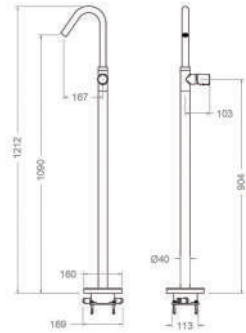
34A309434  
XX1801NM+3400N-35NM+16902NM+RB21HNM

**3416902OC**

34A309435  
XX1801OC+3400N-35OC+16902OC+RB21HOC

Tzar, monomando de lavabo empotrado mural con caño cascada.  
Tzar, wall-mounted basin mixer with waterfall spout.





**347603**

34A307872

**347603NM**

34A307873

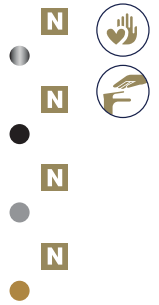
**347603NC**

34A307874

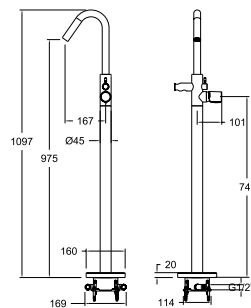
**347603OC**

34A307875

Monomando lavabo de columna.  
Washbasin column mixer.



Cartucho Cartridge: 35100-2



**348503S**

34C303356

**348503SNM**

34C303383

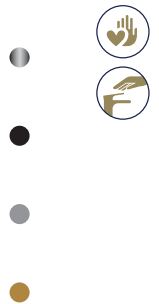
**348503SNC**

34C303386

**348503SOC**

34C303384

Tzar, columna monomando para bañera.  
Tzar, single-lever bathtub column.



**348503MO**

34C303357

348501S+3713M+2471C

**348503DNM**

34C303387

348503SNM+3714NM+2475CNM

**348503DNC**

34C303389

348503SNC+3714NC+2475CNC

**348503DOC**

34C303388

348503SOC+3714OC+2475COC

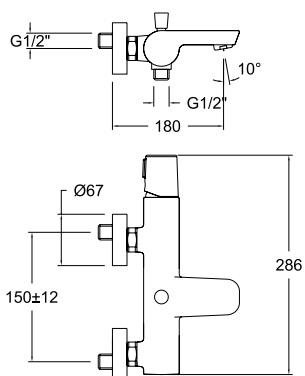
Tzar, columna monomando para bañera con equipo de ducha.  
Tzar, single-lever bathtub column with shower set.



Cartucho Cartridge: 35100-2







**340501S**  
34C302442

**340501SNM**  
34C303664

Tzar, monomando de baño-ducha.  
Tzar, bath-shower mixer.



TR

**340501TR**  
34C302444

340501S+2877TR+3726M+2472C

Tzar, conjunto monomando de baño-ducha con equipo de ducha.  
Tzar, single-lever bath-shower mixer with shower set.



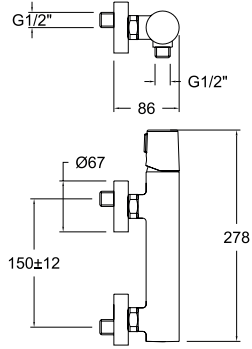
BT

**340501BTNM**  
34C303669

340501SNM+2876BTNM+372602NM+2475CNM

Tzar, conjunto monomando de baño-ducha con equipo de ducha.  
Tzar, single-lever bath-shower mixer with shower set.





**340801S**  
34D302445



**340801SNM**  
34D303665

Tzar, monomando de ducha.  
Tzar, shower mixer.



TR

**340801TR**  
34D302446

340801S+2877TR+3726M+2472C

Tzar, conjunto monomando de ducha con equipo de ducha.  
Tzar, single-lever shower mixer with shower set.



BT

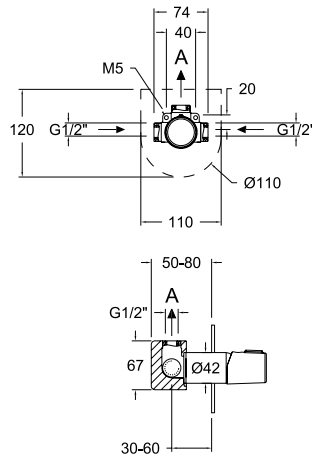
**340801BTNM**  
34C303670

340801SNM+2876BTNM+372602NM+2475CNM

Tzar, conjunto monomando de ducha con equipo de ducha.  
Tzar, single-lever shower mixer with shower set.



**1 Vía/Way**



**341801S**

34D302466  
XX1801+KU1+3400N-35

**341801SNM**

34C302393  
XX1801NM+KU1NM+3400N-35NM

**341801SNC**

34C302392  
XX1801NC+KU1NC+3400N-35NC

**341801SOC**

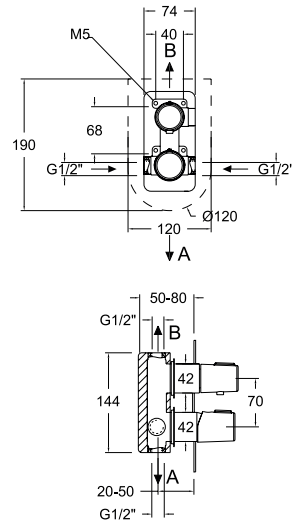
34C302481  
XX1801OC+KU1OC+3400N-35OC

Tzar, monomando de ducha empotrado de 1 vía con placa metálica.  
Tzar, built-in 1-way shower mixer with metallic plate.

Cartucho Cartridge: 35100 (6689-2)



**2 Vías/Ways**



**341502S**

34C302454  
XX1502+KU2+345100+3400N-35

**341502SNM**

34C302384  
XX1502NM+KU2NM+345100NM+3400N-35NM

**341502SNC**

34C302383  
XX1502NC+KU2NC+345100NC+3400N-35NC

**341502SOC**

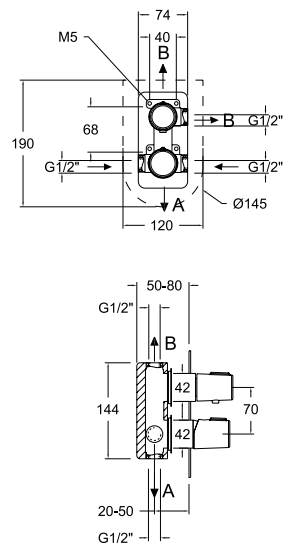
34C302385  
XX1502OC+KU2OC+345100OC+3400N-35OC

Tzar, monomando de baño- ducha empotrado de 2 vías con placa metálica.  
Tzar, wall-mounted 2-way mixer for bath-shower with metal plate.

Cartucho Cartridge: 35100 (6689-2) + 4004



**3 Vías/Ways**



**341503S**

34C302525  
XX1503+KU3+345100+3400N-35

**341503SNM**

34C302388  
XX1503NM+KU3NM+345100NM+3400N-35NM

**341503SNC**

34C302387  
XX1503NC+KU3NC+345100NC+3400N-35NC

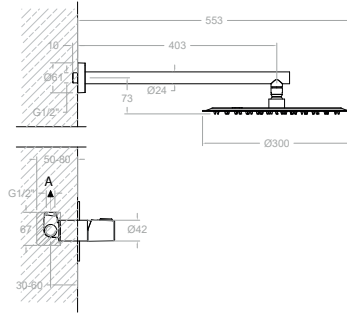
**341503SOC**

34C302390  
XX1503OC+KU3OC+345100OC+3400N-35OC

Tzar, monomando de baño- ducha empotrado de 3 vías con placa metálica.  
Tzar, wall-mounted 3-way mixer for bath-shower with metal plate.

Cartucho Cartridge: 35100 (6689-2) + 4003



**1 Vía/Way****K3418013**

34D309528

341801S-BH02RM300

**K3418013NM**

34D309529

341801SNM-BH02RM300NM

**K3418013OC**

34D309530

341801SOC-BH02RM300OC

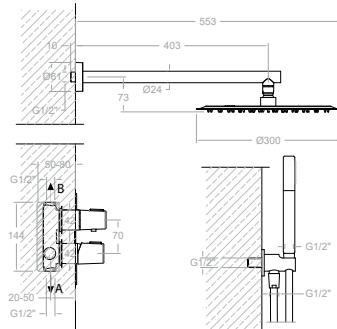
Tzar, conjunto monomando empotrado de 1 vía con rociador metálico de Ø 300 mm.

Tzar, 1-way wall-mounted single-lever mixer with Ø 300 mm metal spray head..



Disponible en Julio  
Available in July

Cartucho/Cartridge: 35100

**2 Vías/Ways****K3415022**

34D309531

341502S-BH02RM300+3713M+3796+2472C

**K3415022NM**

34D309532

341502SNM-BH02RM300NM+3714NM+3796NM+2475CNM

**K3415022OC**

34D309533

341502SOC-BH02RM300OC+3714OC+3796OC+2475COC

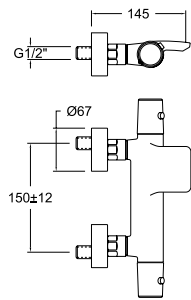
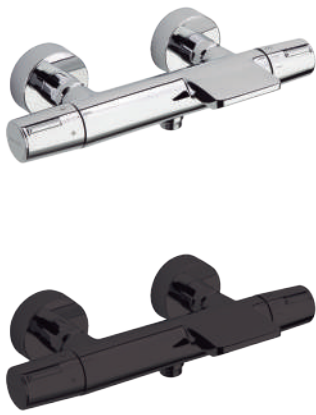
Tzar, conjunto monomando empotrado de 2 vía con rociador metálico de Ø 300 mm..

Tzar, 2-way wall-mounted single-lever mixer with Ø 300 mm metal spray head.



Disponible en Julio  
Available in July

Cartucho/Cartridge: 35100+4004



**343901S**  
34C302449

**343901SNM**  
34C302502

**343901SNC**  
34C302501

**343901SOC**  
34C302503

Tzar, termostático de baño-ducha salida cascada.  
Tzar, bath-shower thermostatic mixer with cascade outlet.



TR

**343901TR**  
34C302464

343901S+2877TR+3726M+2472C

Tzar, termostático de baño-ducha de repisa con caño cascada y equipo de ducha metálico.

Tzar, shelf-mounted bath-shower thermostatic mixer with cascade spout and metallic shower set.



BT

**343901DNM**  
34C302680

343901SNM+3714NM+372602NM+2475CNM

**343901DNC**  
34C302679

343901SNC+3714NC+372602NC+2475CNC

**343901DOC**  
34C302681

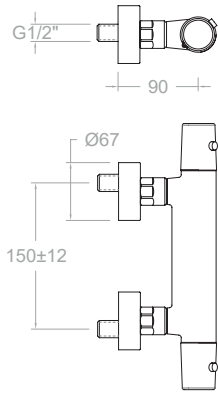
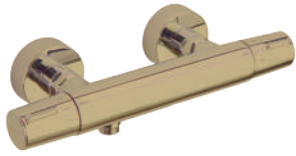
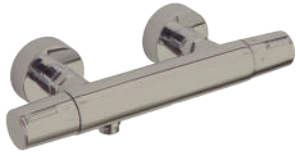
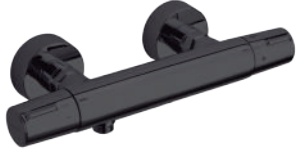
343901SOC+3714OC+372602OC+2475COC

Tzar, termostático de baño-ducha salida cascada con equipo de ducha.

Tzar, bath-shower thermostatic mixer with cascade outlet and shower set.



Cartucho Cartridge: 1701 T + 1700C 1/2"



**343402S**  
34D306712

**343402SNM**  
34D306713

**343402SNC**  
34D306714

**343402SOC**  
34D306715

Tzar, termostático de ducha sin equipo de ducha.  
Tzar, shower thermostatic mixer without shower set.



**343402TR**  
34D306716  
343402S+2877TR+3726M+2472C

Tzar, termostático de ducha con equipo de ducha.  
Tzar, shower thermostatic mixer with shower set.

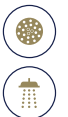


**343402DNM**  
34D306708  
343402SNM+3714NM+372602NM+2475CNM

**343402DNC**  
34D306710  
343402SNC+3714NC+372602NC+2475CNC

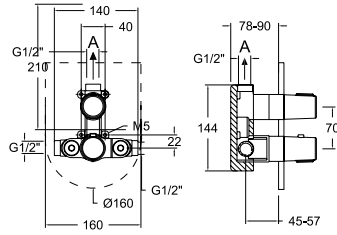
**343402DOC**  
34D306711  
343402SOC+3714OC+372602OC+2475COC

Tzar, termostático de ducha con equipo de ducha.  
Tzar, shower thermostatic mixer with shower set.



Cartucho Cartridge: 1701 T + 1700C 1/2"

1 Vía/Way



342411S

34D302526

XX2411+KTU1+345000+345100

342411SNM

34D302493

XX2411NM+KTU1NM+345000NM+345100NM

342411SNC

34D302492

XX2411NC+KTU1NC+345000NC+345100NC

342411SOC

34D302494

XX2411OC+KTU1OC+345000OC+345100OC

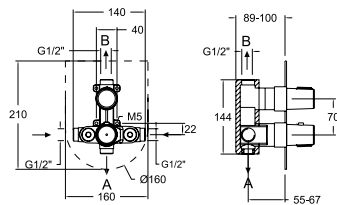
Tzar, termostático de ducha empotrado de 1 vía con placa metálica.

Tzar, recessed 1-way shower thermostatic mixer with metallic plate.



Cartucho Cartridge: 1703T + 1700C3/4"

2 Vías/Ways



348712S

34D302527

XX8712+KTU2+345000+345100

348712SNM

34D302511

XX8712SNM+KTU2NM+345000NM+345100NM

348712SNC

34D302510

XX8712SNC+KTU2NC+345000NC+345100NC

348712SOC

34D302512

XX8712SOC+KTU2OC+345000OC+345100OC

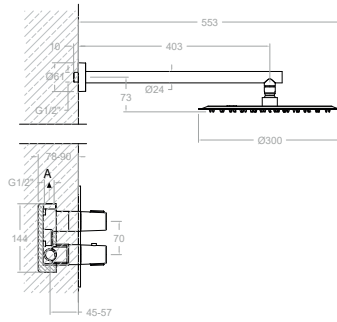
Tzar, termostático de baño-ducha empotrado de 2 vías con placa metálica extraplana.

Tzar, recessed 2-way bath-shower thermostatic mixer with ultra-flat metallic plate.



Cartucho Cartridge: 1703T + 4000

1 Vía/Way



**K3424013**

34D309534  
342411S-BH02RM300

**K3424013NM**

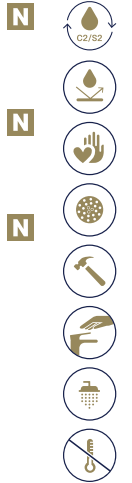
34D309536  
342411SNM-BH02RM300NM

**K3424013OC**

34D309537  
342411SOC-BH02RM300OC

Tzar, conjunto termostático empotrado de 1 vía con rociador metálico de Ø 300 mm.

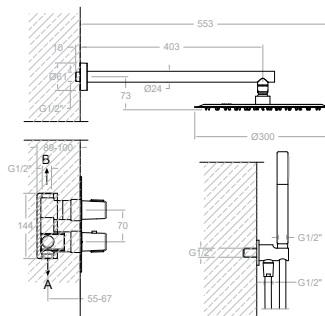
Tzar, 1-way thermostatic wall-mounted set with Ø 300 mm metal shower head.



Disponible en Julio  
Available in July

Cartucho Cartridge: 35100

2 Vías/Ways



**K3487012**

34D309538  
348712S-BH02RM300+3713M+3796+2472C

**K3487012NM**

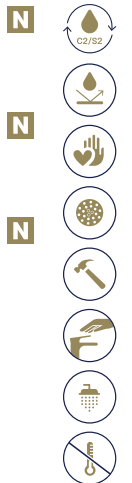
34D309539  
348712SNM-BH02RM300NM+3714NM+3796NM+2475CNM

**K3487012OC**

34D309540  
348712SOC-BH02RM300OC+3714OC+3796OC+2475COC

Tzar, conjunto termostático empotrado de 2 vía con rociador metálico de Ø 300 mm.

Tzar, 2-way thermostatic wall-mounted set with Ø 300 mm metal shower head.



Incluido · including

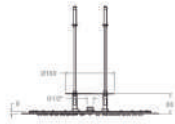


Disponible en Julio  
Available in July

Cartucho Cartridge: 35100+4004







**SK3487011**

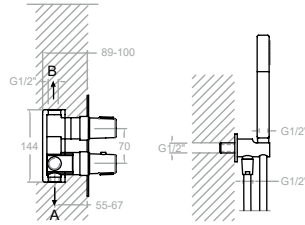
34D302764

348712S+3713M+3796+2472C

Tzar, conjunto empotrado termostático de 2 vías con placa metálica.

Tzar, 2-way thermostatic wall-mounted set with metal plate.

+



**RE1450**

99Z309550

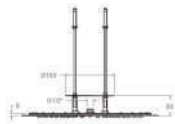
Rociador empotrado redondo de Ø450mm.

Recessed round Ø450mm showerhead.

Disponible en Julio  
Available in July



N



**SK3487011NM**

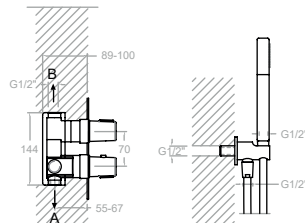
34D305400

348712SNM+3714NM+3796NM+2475CNM

Tzar, conjunto empotrado termostático de 2 vías con placa metálica.

Tzar, 2-way thermostatic wall-mounted set with metal plate.

+



**RE1450NM**

99Z309551

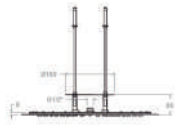
Rociador empotrado redondo de Ø450mm.

Recessed round Ø450mm showerhead.

Disponible en Julio  
Available in July



N



**SK3487011OC**

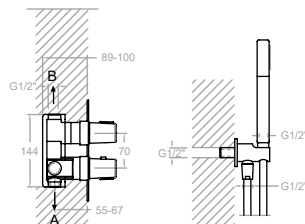
34D305401

348712SOC+3714OC+3796OC+2475COC

Tzar, conjunto empotrado termostático de 2 vías con placa metálica.

Tzar, 2-way thermostatic wall-mounted set with metal plate.

+



**RE1450OC**

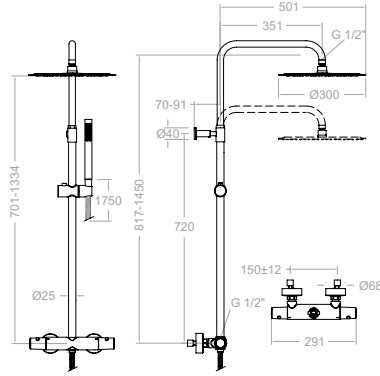
99Z309552

Rociador empotrado redondo de Ø450mm.

Recessed round Ø450mm showerhead.

Disponible en Julio  
Available in July





**345412RM300**

34D308555  
341202S+DN132D+RM300+3713M+2472C

**345412RM300NM**

34D309425  
341202SNM+DN132DNM+RM300NM+3714NM+2475CNM

**345412RM300OC**

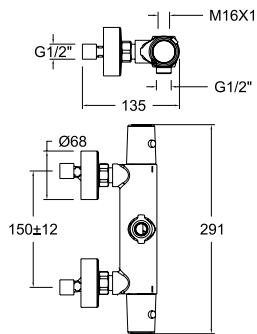
34D309426  
341202SOC+DN132DOC+RM300OC+3714OC+2475COC

**345412RM300NC**

34D309428  
341202SNC+DN132DNC+RM300NC+3714NC+2475CNC

Tzar, columna telescópica termostática con rociador metálico de Ø300 mm.

Tzar, thermostatic telescopic column with Ø300 mm metal shower head.



**341202S**

34D303525

**341202SNM**

34D303744

**341202SNC**

34D303742

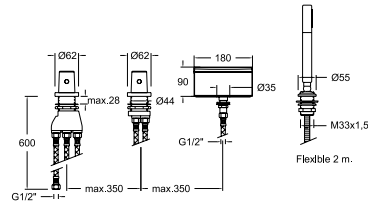
**341202SOC**

34D303746

Tzar, cuerpo termostático de ducha.

Tzar, thermostatic shower body.





**343303TM**

34C302458

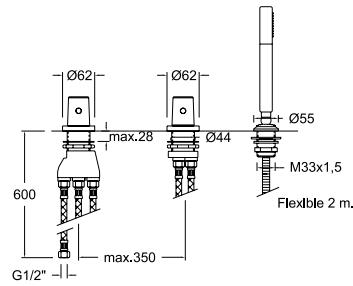
T3433+D3433+3713M+9989SC+CR01+2850C

Tzar, termostático de baño-ducha de repisa con caño cascada y equipo de ducha metálico.

Tzar, shelf-mounted bath-shower thermostatic mixer with cascade spout and metallic shower set.



Cartucho Cartridge: 1700 TE + 4000



**343303TSCAM**

34C302459

T3433+D3433+3713M+9989SC+2850C

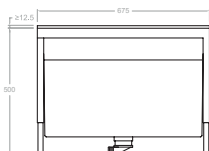
Tzar, termostático de ducha de repisa con equipo de ducha.

Tzar, shelf-mounted shower thermostatic mixer with metallic shower set.



Cartucho Cartridge: 1700 TE + 4000

Recomendaciones Recommendations

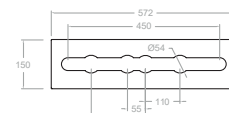


**100502**

AAZ302174

Depósito de repisa extraíble para conjunto baño.

Removable shelf tank for bathroom set.



**100502R**

AAZ302626

Repisa extraíble para conjunto baño.

Mounting plate for bath deck.